



NSW Government

Department of Water & Energy

## Critical water planning for the Murrumbidgee Valley

---

Issue 19 | 17 November 2008

### Current water availability

Total rainfall across the catchment over the past four weeks has varied from 97.0 millimetres (mm) at Thredbo Top Station to 30.2 mm at Balranald, while 38.8 mm of rainfall was recorded at Griffith.

Inflows into the Murrumbidgee Valley's storages are better now than at the same time last year; however, resources are still very much below average.

The following table shows Murrumbidgee Valley storage levels as at 12 November 2008.

Storage @ 12 November 2008	Volume (GL)	Percent of capacity	Change in Volume 12 October to 12 November 2008 (GL)	Volume at this time last year.
Burrinjuck Dam	498	48	-10	386
Blowering Dam	718	43	-71	522
<b>Total</b>	<b>1216</b>			<b>908</b>

### What this means

The small increase in availability has been insufficient to permit an increase in allocations.

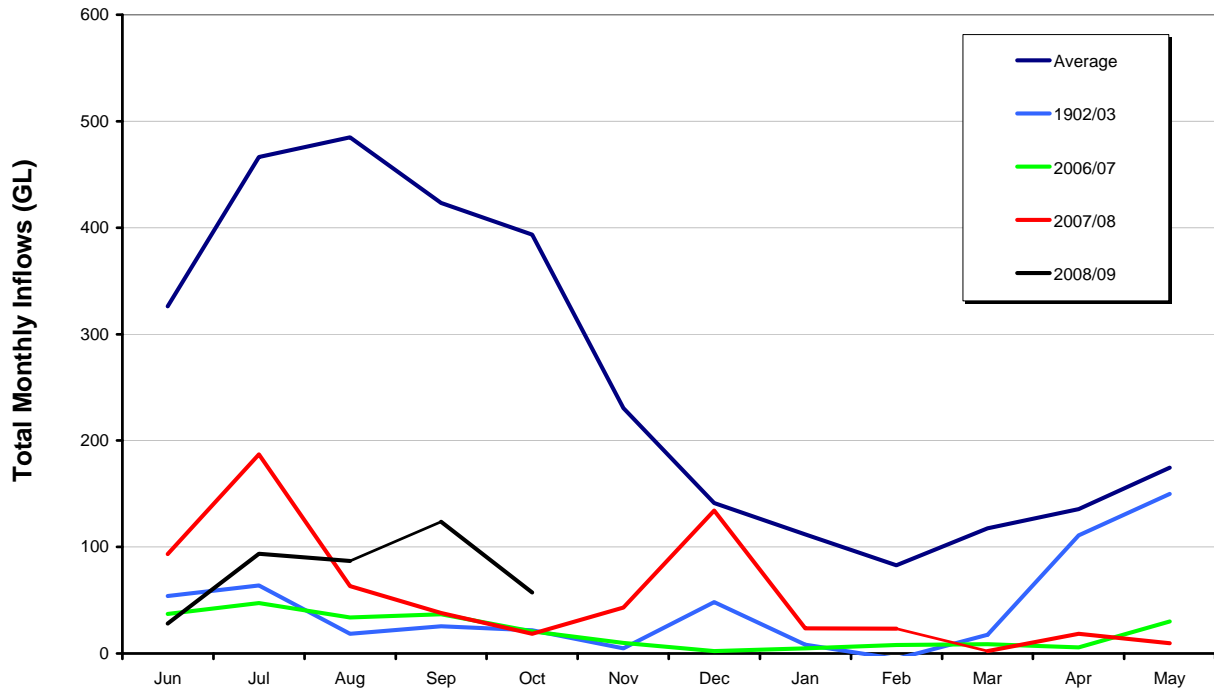
High security, Town Water Supply and Stock and Domestic remain on 95 per cent of entitlement with General security remaining on 7 per cent of entitlement, with a further 2 per cent available after February 2009.

Any further increases in water availability in the Murrumbidgee Valley will be balanced between the need to increase General security allocations and reserving water to meet critical human needs in 2009/10.

Any improvement in water availability will be closely monitored and announced in media releases; however, this will be the last critical water planning communiqué for 2008.

---

**Total Murrumbidgee Valley System Natural Inflows (excluding Snowy)  
Selected Drought Years-v-Long term average**



This graph shows the long-term average system inflows comparing 2007/08 to recent drought years. The 'black line' indicates inflows so far this water year.

### **Carryover rules**

If the Murrumbidgee Water Sharing Plan remains suspended, High and General security licences will be permitted to carryover a maximum of 30 per cent of entitlement. Should the Water Sharing Plan be recommenced, then the rules in the plan will apply.

All allocations in 2009/10 will be limited - meaning that the sum of carryover plus allocations **cannot** exceed 100 per cent.

### **Trade**

Water users should be aware that while 9 per cent of General security entitlement is available for the full season, only 7 per cent is available for use or trade now.

### **Town water supply in 2008/09**

Town Water Supply has been increased to 95 per cent of entitlement. Water supply authorities are asked to remain as conservative as possible, as water to meet critical human needs for 2009/10 has **not** yet been reserved.

### **Compliance**

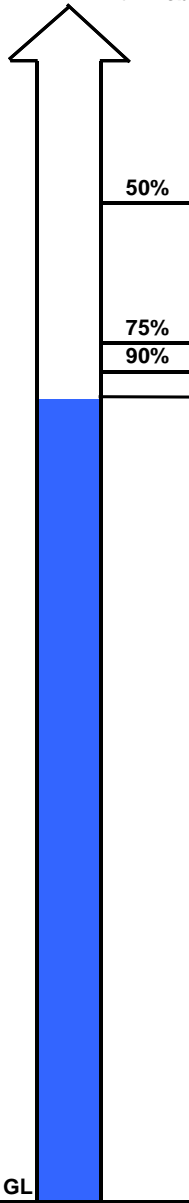
The Department of Water and Energy's Drought Contingency Planning Program will only work if everyone adheres to the restrictions and is careful with **all** water use. To ensure that the system is run fairly, the community should report any suspected breaches to the Department's Compliance Unit via phone 1800 633 362 or by email to [watercompliance@dwe.nsw.gov.au](mailto:watercompliance@dwe.nsw.gov.au). All reports are confidential.

## Water availability outlook

### Murrumbidgee Valley Indicative Outlook

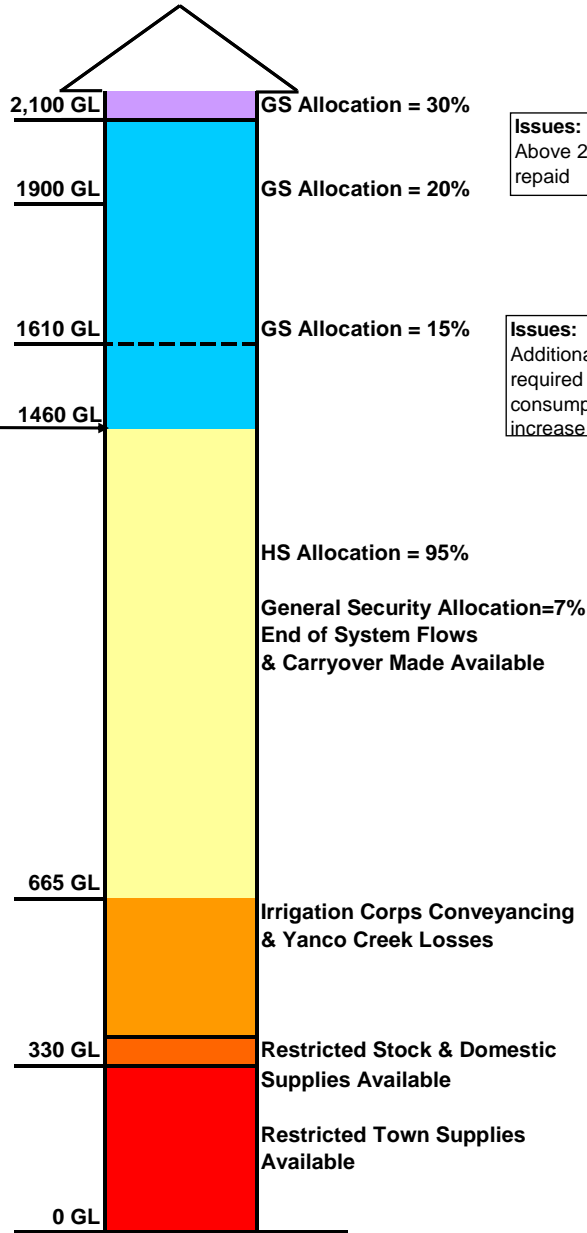
#### Availability @ 15/11/08

Chances



#### Chances At 1 February

#### Indicative Requirements



**Issues:**  
 Above 20% GS borrowed EWA is repaid

**Issues:**  
 Additional river losses and conveyance is required to deliver the additional consumption water as allocations increase

Note: This advice only provides an indication of potential improvements and any planning decisions should also recognise the current conditions and meteorological predictions.

**Contact:** Bunty Driver 03 5898 3900