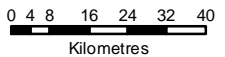


- Legend**
- Town
 - Upper Namoi/Lower Namoi Regulated River Water Sources
 - Unregulated River/Creek
 - Road and Highway
 - Dam
 - Namoi Water Management Area



Map 23- Upper and Lower Namoi Regulated River Water Sources





Name of Water Source:

Upper Namoi and Lower Namoi Regulated River Water Sources

Relevant Water Sharing Plan: Water Sharing Plan for the Upper Namoi and Lower Namoi Regulated River Water Sources gazetted on 21 February 2004 and as amended by order on 1 July 2004.

Description of Water Source:

The Upper Namoi and Lower Namoi Regulated River Water Sources lie within the Namoi Water Management Area as shown in Map 23.

The Upper Namoi and Lower Namoi Regulated River Water Sources comprise:

- The Upper Namoi Regulated River Water Source is that between the banks of all rivers, from the dam wall of Split Rock Dam water storage located at longitude 150.516200 and latitude –30.823200 downstream to the dam wall of Keepit Dam water storage located at longitude 150.708200 and latitude –30.489200;
- The Lower Namoi Regulated River Water Source is that between the banks of all rivers, from the dam wall of Keepit Dam water storage, located at longitude 150.708200 and latitude –30.489200, downstream to the junction of the Namoi River with the Barwon River, at Walgett, located at longitude 148.07082 and latitude –30.00546.

Definition of Waters Included:

A regulated river is a river that is declared by the Minister, by order published in the New South Wales Government Gazette, to be a regulated river. The regulated rivers included in this water source may be varied, replaced and otherwise changed by subsequent orders published in the Gazette.

The Upper Namoi and Lower Namoi Regulated River Water Sources includes, but are not limited to, the following rivers:

Upper Namoi Regulated River Water Source:

- Manilla River from the dam wall of Split Rock Dam water storage located at longitude 150.516200 and latitude –30.823200, downstream to its junction with the Namoi River, and
- Namoi River from its junction with the Manilla River to the dam wall of Keepit Dam storage, located at longitude 150.708200 and latitude –30.489200, including all tributaries (named and unnamed) to Keepit Dam water storage and up to the high water mark of the storage;

Lower Namoi Regulated River Water Source:

- Anabranh of Namoi River, offtaking in T.S.R. 31104, Parish of Tipereena, County of Nandewar,
 - Duncan Warrambool,
-

- Gunidgera Creek, offtaking from the Namoi River within T.S.R. 10783, Parish of Tulladunna, County of Jamison, downstream to the northern boundary of portion 21, Parish of Merah, County of Jamison,
- Horsearm Creek, from its confluence with Narrabri Creek upstream to a point coinciding with the upstream alignment of the Narrabri to Wee Waa road bridge on Main Road No. 127 located in the town of Narrabri, Parish of Narrabri, County of Nandewar,
- Namoi River, from the dam wall of Keepit Dam water storage downstream to the offtake of Narrabri Creek,
- Namoi River from its confluence with Narrabri Creek to Barwon River,
- Narrabri Creek,
- Unnamed watercourse off taking from the Namoi River within Lot 63 DP753929, Parish of Drilool, County of Jamison to its confluence with the Namoi River within Lot 63, DP753929, Parish of Drilool, County of Jamison.
- Pian Creek, from the confluence of unnamed watercourse within portion 27, Parish of Pian, County of Jamison, the confluence being approximately 200 metres east of the western boundary of portion 27 and approximately 400 metres north of the southwestern boundary of that portion, downstream to the northernmost western boundary of portion 37, Parish of Murra Murra, County of Denham,
- Ulled lagoon,
- Unnamed watercourse, offtaking from Gunidgera Creek within portion 4, Parish of Weeta Waa, County of Jamison, downstream to its confluence with Pian Creek, within T.S.R. 27151, Parish of Pian, County of Jamison;
- Unnamed watercourse, from its offtake from Namoi River, in portion 10, Parish of Bullerawa, County of Baradine, to its re-entry in portion 11, Parish of Bullerawa, County of Baradine and
- Warriar lagoon

Specific Exclusions:

Pian Creek from Dundee Weir to its junction with the Namoi receives domestic and stock replenishment flows from these water sources, but does not itself form part of these water sources.

The Upper Namoi and Lower Namoi Regulated River Water Sources do not include the Peel River.